



ORIGINAL MEDICARE 2021

Your costs in Original Medicare

MEDICARE PART A

Hospital Care

days 1-60 = \$1484
days 61-90 = \$371 per day
days 91-150 = \$742 per day

Skilled Nursing

days 1-20 = \$0*
days 21-100 = \$185.50 per day
day 100+ = No LTC coverage

Home Health Services

\$0

Hospice

Generally covered \$0
5% co-pay for Rx

MEDICARE PART B

\$148.50 Premium per month**
\$203.00 annual deductible
20% co-insurance after deductible

Physician services

Laboratory services

Diagnostic Testing

Durable Medical Equipment

Physical Therapy

Ambulance Transport

Emergency services

Outpatient services

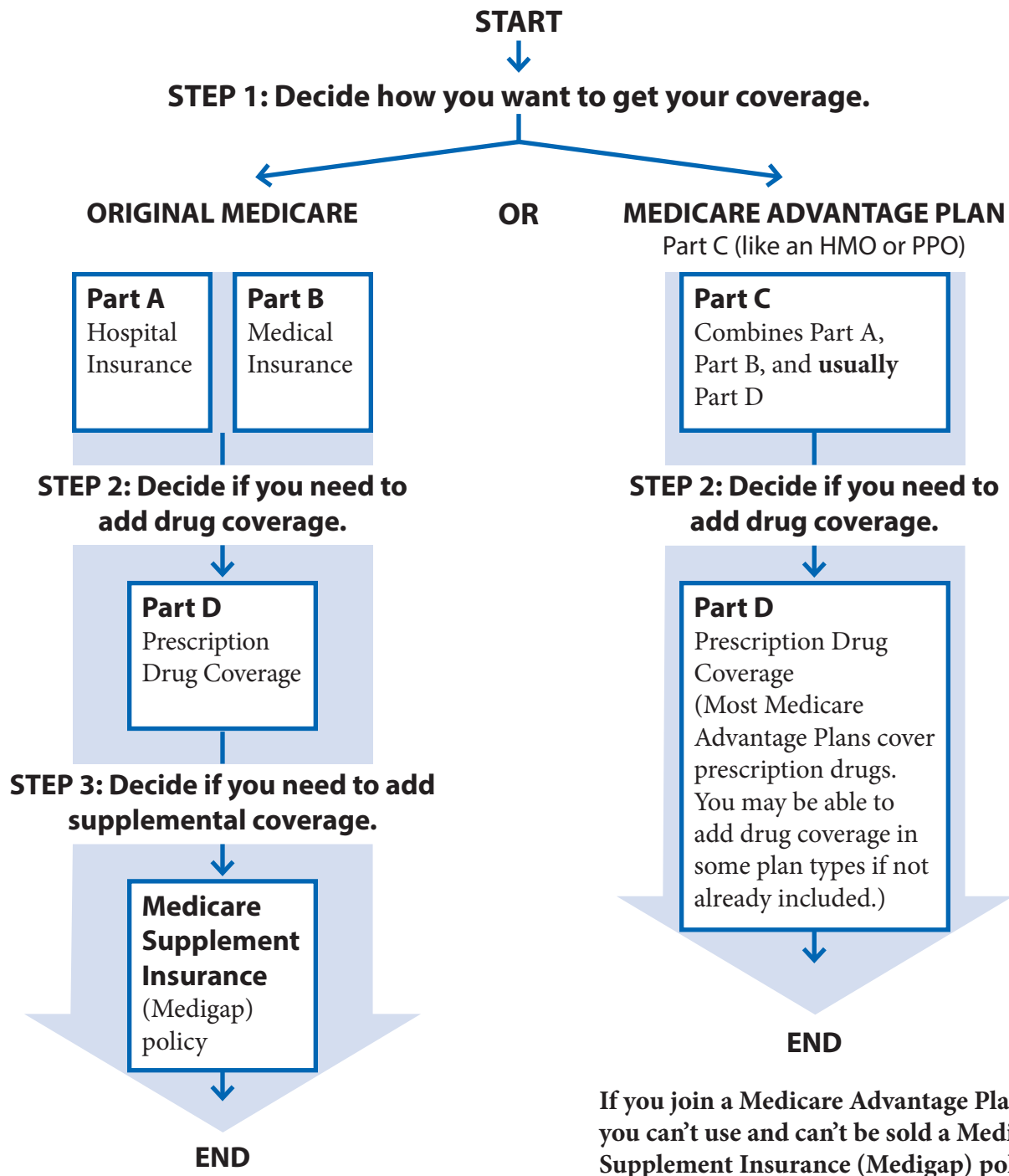
Clinical Rx

* Skilled Nursing Benefit requires 3 night admitted stay at a hospital

** Part B premium is income driven - listed cost is the standard premium

Your Medicare coverage choices at a glance.

There are 2 main ways to get your Medicare coverage — Original Medicare or a [Medicare Advantage Plan](#). Use these steps to help you decide.



How do I compare Medigap policies?

This chart shows basic information about the different benefits that Medigap policies cover. If a percentage appears, the Medigap plan covers that percentage of the benefit, and you must pay the rest.

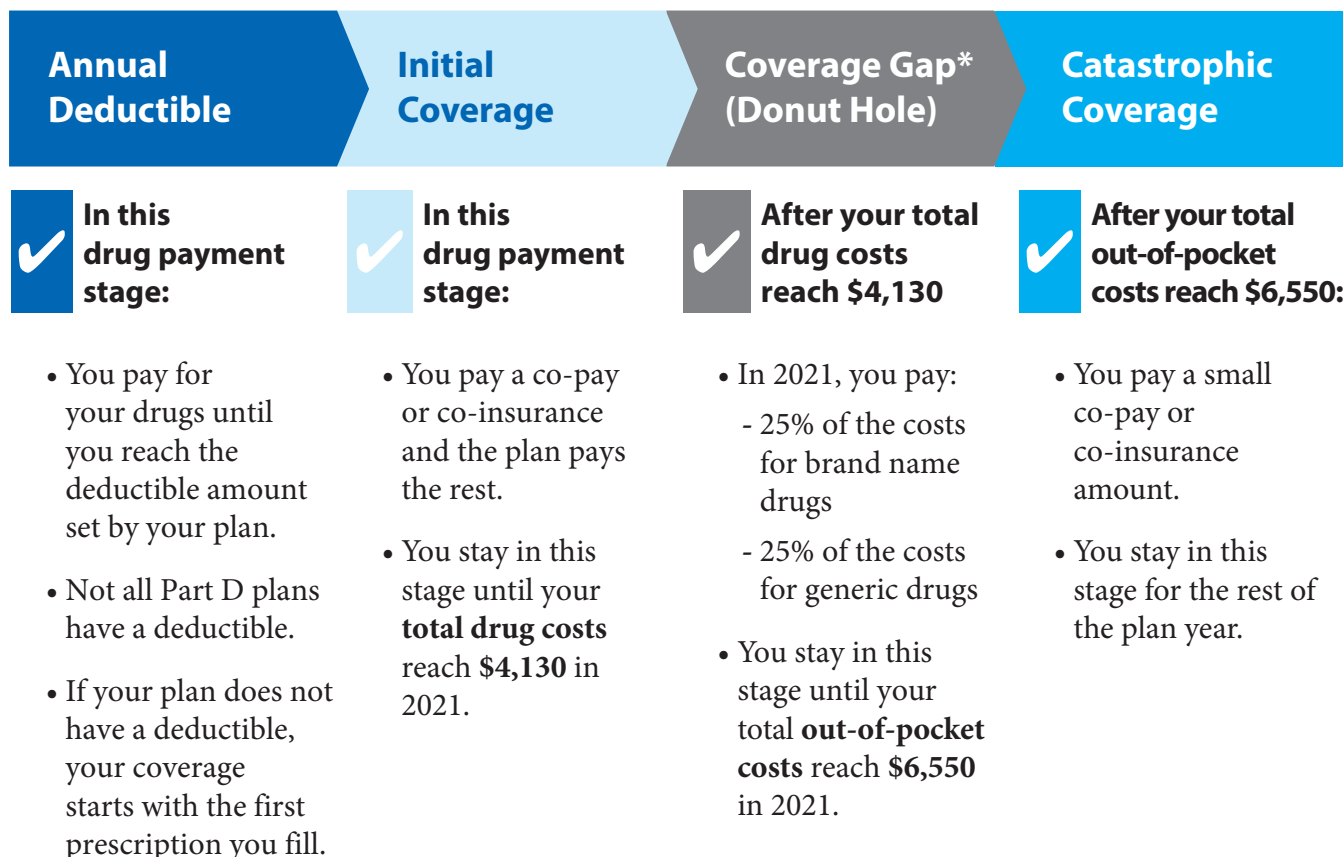
	Medicare Supplement Insurance (Medigap) Plans									
Benefits	A	B	C	D	F*	G*	K	L	M	N
Medicare Part A coinsurance and hospital costs (up to an additional 365 days after Medicare benefits are used)	100%	100%	100%	100%	100%	100%	100%	100%	100%	100%
Medicare Part B coinsurance or copayment	100%	100%	100%	100%	100%	100%	50%	75%	100%	100% ***
Blood (first 3 pints)	100%	100%	100%	100%	100%	100%	50%	75%	100%	100%
Part A hospice care coinsurance or copayment	100%	100%	100%	100%	100%	100%	50%	75%	100%	100%
Skilled nursing facility care coinsurance			100%	100%	100%	100%	50%	75%	100%	100%
Part A deductible		100%	100%	100%	100%	100%	50%	75%	50%	100%
Part B deductible			100%		100%					
Part B excess charges					100%	100%				
Foreign travel emergency (up to plan limits)			80%	80%	80%	80%			80%	80%
							Out-of-pocket limit in 2021**			
							\$6,220	\$3,110		

* Plan F and G also offer a high-deductible plan in some states. With this option, you must pay for Medicare-covered costs (coinsurance, copayments, and deductibles) up to the deductible amount of \$2,370 in 2021 before your policy pays anything. (Plans C and F won't be available to people who are newly eligible for Medicare on or after January 1, 2020.)

** For Plans K and L, after you meet your out-of-pocket yearly limit and your yearly Part B deductible (\$198 in 2020), the Medigap plan pays 100% of covered services for the rest of the calendar year.

*** Plan N pays 100% of the Part B coinsurance, except for a copayment of up to \$20 for some office visits and up to a \$50 copayment for emergency room visits that don't result in an inpatient admission.

Understanding Medicare drug payment stages.



* If you get Extra Help from Medicare, the coverage gap doesn't apply to you.

Total drug costs:

The amount you (or others on your behalf) and your plan pay for your prescription drugs. Your plan premium payments are not included in this amount.

Out-of-pocket costs:

The amount you (or others on your behalf) pay for your prescription drugs plus the discount on your brand name drugs provided by drug manufacturers. Your plan premium payments are not included in this amount.

Note: On January 1 of each plan year, the coverage cycle starts over and the dollar limits can change. Amounts listed above reflect the 2021 plan year.